

# NATURE TRAILS IN ANDALUSIA



## NATURE TRAILS IN ANDALUSIA

In the following pages, the Nature Trails running through Andalusia are briefly described. Among those, there are short walks such as Guadalquivir, long walks such as Los Molinos del Agua, la Campiña, Aceite, or the Guadix-Almendricos Railway, or long treks such as the one which follows the course of the River Guadiana.

**Aceite Greenway (Jaén, Córdoba).** The layout of an old railway line that communicated Linares (Jaén) and Puente Genil (Córdoba) from the 19th century until the early 20th century serves as the base for the Aceite Greenway Nature Trail. It owes its name to the railway line popularly known as the "Olive Oil Train" due to the main product it used to transport. The route, composed of three sections, travels through the olive groves filled Andalusian landscapes.

**La Campiña Greenway (Córdoba, Sevilla).** A 54.2 km long route which runs along part of the old Córdoba-Marchena railway line, which went out of operation in the 1970s, crossing sunflower fields and grain fields dotted with olive trees, which are specially pretty in springtime, when the colours of different crop fields are in bright contrast.

**Entre Ríos Greenway (Cádiz).** This Nature Trail runs along the old railway, popularly known as "Tren de la Costa", which linked El Puerto de Santa María and Sanlúcar de Barrameda. It was primarily built to transport sherry wine to the seaport for export to England. A 16 km stretch along the coast of Cádiz passes through an agricultural landscape that allows travellers to enjoy the valuable coastal pine groves that secure the mobile dunes.

**Los Molinos de Agua Greenway (Huelva).** This route runs through the province of Huelva, along the old railway line that joined the Butrón mines with the dock owned by



Guadiana Nature Trail



Aceite Greenway Nature Trail



Lucainena de las Torres to Agua Amarga Greenway Nature Trail

**MORE INFORMATION:**

[www.caminosnaturales.es](http://www.caminosnaturales.es)



NIPO: 013-17-167-6

## BETWEEN TWO CONTINENTS

A region located far south-eastern Europe, being inhabited since ancient times by Phoenicians, Romans, Arabs, Berbers, Castilians, Central Europeans, etc. has given this Autonomous Community its characteristic open, multicultural identity, besides an impressive historical, artistic and cultural heritage, a distinctive cuisine and a warm weather which welcomes visitors in any time of the year.

In this territory, the traveller can enjoy a marked variety in landscape, from the wide and fertile Guadalquivir valley and the Doñana National Park marshes to the high peaks of Sierra Nevada, from the sandy deserts of Almería to the lush vegetation of Sierra de Grazalema, the area with most abundant rainfall in Spain, and, of course, a coastline of 1,101 km.

This Autonomous Community offers 13 Natural Trails which either run totally though Andalusian territory or are shared with other Autonomous Communities.



Since 1993 the Ministry for Agriculture, Fisheries and Food's Nature Trails Program aims to restore former transport infrastructures such as railway tracks, cattle trails and traditional routes, for public use and enjoyment.

These routes take us to the countryside to discover the biodiversity and beauty of our precious natural heritage, and discover the villages, sights, traditions and people that are part of the unique cultural landscape of our country.

We invite you to visit the Nature Trails in Andalusia and offer you the keys to enjoy the trip. We only ask one thing of you: do not forget to leave everything as you found it. The conservation of these pathways is also your responsibility.

the mining company in San Juan del Puerto, where this 34-km trail ends. Olive trees, cork oaks and pines, among other trees, dot the patches of farmland and surround the walker, who may also visit the important Los Gabrielés dolmen complex.

**Guadalquivir Greenway (Jaén).** A trail 15.5 km long which runs in the Linares and Begíjar territories. It offers breathtaking views over a landscape of olive groves, leafy riverside woodlands by the Guadalquivir River or in the Guadiana valley, and allows the walker to visit many remains of the mining and industrial heritage, besides the railway line itself, as well as the remains of the Iberian-Roman town of Castiulo.

**Guadiana (Albacete, Ciudad Real, Badajoz, Huelva).** The River Guadiana 818 km long, is the second longest river in the Iberian Peninsula. Its source is located in the Ruidera Lake, between Albacete and Ciudad Real, after which it disappears and resurfaces in the area called Ojos del Guadiana, goes through the province of Badajoz, crosses into Portugal and runs all along the Portuguese border, in the Huelva side, before discharging into the Atlantic sea. This Nature Trails consists in 44 stages, and is interrupted at the Portuguese stretch.

**Guadiana Greenway (Huelva).** This 16.6 km long trail follows the layout of the mining railway which joined the Herrerías mines with the La Laja mining port for more than a century. This railway line, and places such as the La Isabel mine, allowed Spain, at the end of the 19th century, to become the main worldwide producer of manganese and an important international producer of copper and sulphur.

**Guadiato Greenway (J).** Making use of part of this dismantled railway line, this 7 km long route runs surrounded by holm oaks groves. This route connects with other itineraries, which keep exploring the mining vocation of this part of the province of Córdoba.

**Guadix-Almendricos Greenway (Almería).** Halfway between Sierra de Filabres and River Almanzora Valley, this next to 60 km long trail makes use of the middle stretch, which ended its service between Guadix and Almedricos, of the mining railway that connected Granada and Aguilas, known as Almanzora railway.

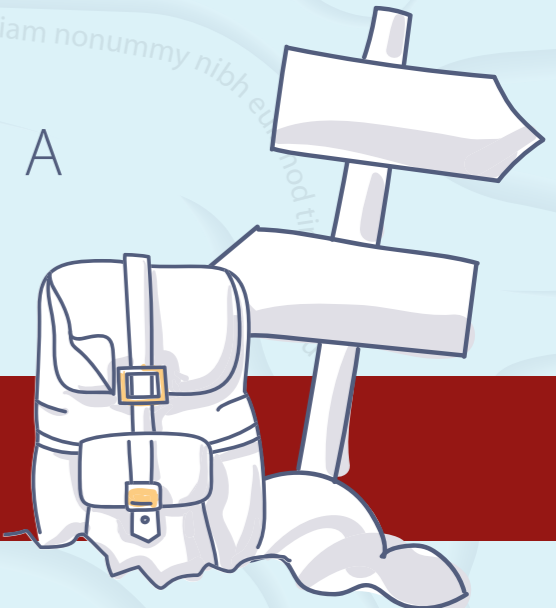
**Litoral Greenway (Huelva).** This Route runs parallel to the coastline along 48.7 km, from Huelva to Ayamonte, using the old railway line originally built to transport fish from Isla Cristina and Lepe to Madrid, and ore from El Andévalo to the coast. *(This trail is suffering important maintenance problems).*

**Lucainena de las Torres to Agua Amarga Greenway (Almería).** This route follows the trail of the old mining train between Lucainena de las Torres and the loading platform of Agua Amarga, through an arid landscape dominated by the Sierra de Alhamilla and accompanied by the shallow ravine of Lucainena.

**Segura Greenway (Jaén).** This Nature Trail, 28.7 km long, crosses the Sierra del Segura county (67.3% of which corresponds to the Sierra de Cazorla, Segura and Las Villas Natural Park), crossing the towns of Arroyo del Ojanco, Segura de la Sierra, Puente de Génave, La Puerta de Segura, Génave and Villarrodrigo.

**La Sierra Greenway (Cádiz).** This route passes through a total of 29 tunnels carved out of the heart of the mountains for the railway line that sought to join Jerez and Almarén. The longest tunnel, which is nearly 500 metres in length, is located at the end of the route. Despite this massive endeavour, the Civil War doomed the completion of the project. White villages, olive trees, fighting cattle, the Peñón de Zafraagón Nature Reserve, megaliths and rivers which are home to other sanctuaries are the main attractions of this 35.5 km route.





Lorem ipsum dolor sit amet, consectetur adipiscing elit, sed diam nonummy nibh euismod tincidunt ut laoreet dolore magna aliquam erat volutpat.