



Church of Santa María



Beginning of the route in Fonteantiga



Entrance to the town of A Fraga

**10.** From a Fraga, the route goes back along part of the initial path to join the track towards Fonteantiga.

**5.** The one on the right leads to the recreational area of Porto de Eguas.

The other main tourist attraction of O Carballiño is the

is a spa town. Its mineral springs, known since Roman times, have led to the creation of its two main spa resorts: Caldas de Partovia and the Gran Bahneario. The latter opened in 1816 and is located by the River Arrenteiro. Its premises include a famous garden with century-old trees.

With construction works starting in the 1940s, its unusual architecture leaves no one indifferent, since it displays a mix of architectural and sculpture styles: Byzantine, Pre-Romanesque, Romanesque and Gothic, which makes this church an original, unconventional one.

The church was a design of Antonio Palacios, a famous architect and an O Porrño native who died before seeing the church completed. The church's impressive tower, over 60 metres high, and the more than 6,000 arches that are part of its structure, are especially noteworthy.

#### O CARBALLIÑO

The church of Vera Cruz in O Carballiño, Ourense, is locally known as "the new church" to differentiate it from the other church in the town.

Over 60 metres high, and the more than 6,000 arches that are part of its structure, are especially noteworthy.

the church was a design of Antonio Palacios, a famous

architect and an O Porrño native who died before seeing

the church completed. The church's impressive tower,

over 60 metres high, and the more than 6,000 arches

that are part of its structure, are especially noteworthy.

The other main tourist attraction of O Carballiño is the

is a spa town. Its mineral springs, known since Roman

times, have led to the creation of its two main spa re-

sorts: Caldas de Partovia and the Gran Bahneario. The lat-

ter opened in 1816 and is located by the River Arrenteiro.

Its premises include a famous garden with century-old

DE NPO

**TELEPHONES OF INTEREST:**  
• City Council of O Carballiño;

0034 988 53 00 07

pathways is also your responsibility.

We invite you to visit them and offer you the keys to enjoy the trip. In this brochure you will find a brief description of The Arrieiros Nature Trail and the map for the journey, along with recommendations to make the most of this experience. We only ask one thing of you: do not forget to leave everything as you found it. The conservation of these

part of the unique cultural landscape of our country.

These routes take us to the countryside to discover the biodiversity and beauty of our precious natural heritage, and discover the villages, sights, traditions and people that are

part of the unique cultural landscape of our country.

Since 1993 the Ministry for Agriculture and Fisheries, Food and the Environment's Nature Trails Program aims to restore former transport infrastructures such as railway tracks, cattle trails and traditional routes, for public use and enjoyment.

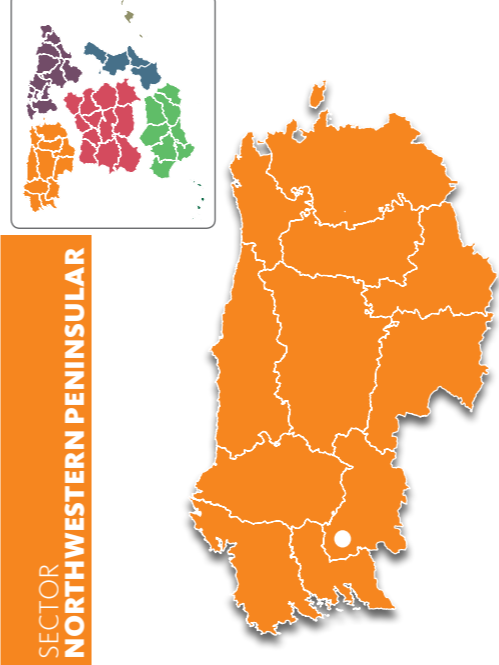
part of the unique cultural landscape of our country.



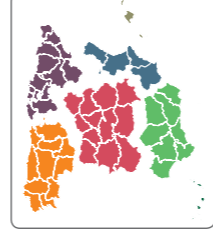
#### TRAILS THAT MEET UNDERNEATH THE OAKS

This nature trail's route runs among centenary oaks, discovering hidden brooks and leafy riparian forests, boasting an extraordinary biodiversity.

The Arrieiros Nature Trail is located in the municipality of O Carballiño, in the north of the province of Ourense. The main route, which begins in Fonteantiga, follows a circular trail of around 10 kilometres through a gravel track bordering the Regato do Fondós stream. Plenty of intersections meet the trail, inviting the traveller to choose between different branches.



#### SECTOR NORTHWESTERN PENINSULAR



### Guide to the Nature Trails of Spain



#### SECTOR NORTHWESTERN PENINSULAR NATURE TRAIL THE ARRIEIROIS

The main route starts in Fonteantiga, a small town of the municipality of O Carballiño, from where a gravel track bordering the Regato do Fondós departs.

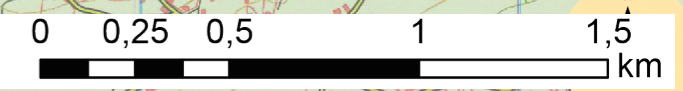
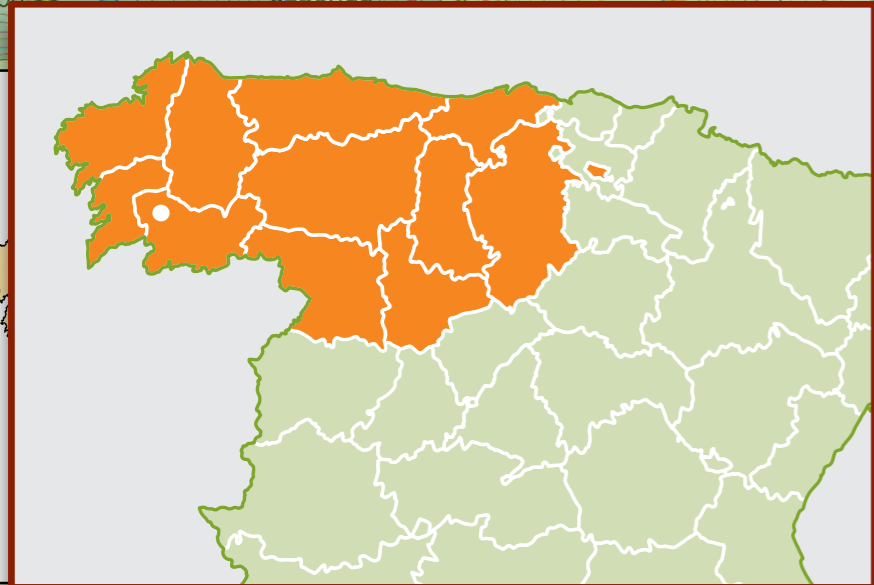
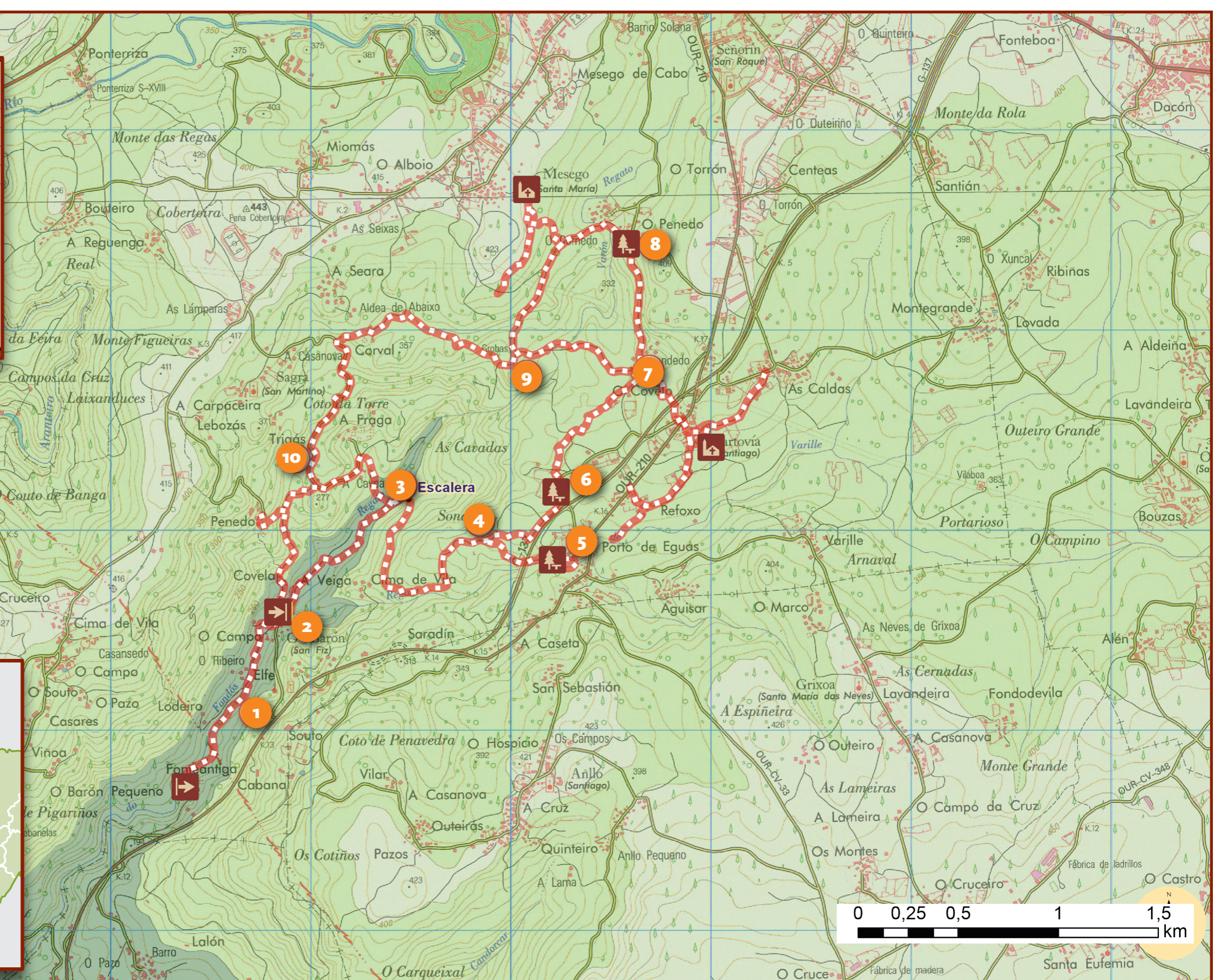
1. Leaving a fountain behind and to the right, the gravel trail becomes a stone path that runs through a leafy alder forest. Then, it crosses a stone bridge that allows the traveller to enter the Lodeiro vineyards, where there is a hamlet with its own chapel.
2. The route continues through the dense riparian forest along the riverbank towards San Fiz de Varón. After going through the town centre, the route crosses a bridge and turns left. Leaving a water mill behind and going through some vegetable gardens, we reach the road leading to the town of O Varón.
3. The trail goes over the bridge and turns right between a "horo" (a raised granary) and a traditional house, until leaving the town centre through a narrow gravel path. Further on, we reach an intersection where the path turns right and continues through a diversion towards the town of A Fraga.
4. At this point, the trail starts to drift away from the river, climbing some steep stairs among oaks until it arrives at the abandoned town of Sona. There is an intersection at the town exit that provides the traveller with three different options.
5. The one on the right leads to the recreational area of Porto de Eguas.

6. On the left, after going past a fountain, the trail continues almost parallel to road OU-210 and, after reaching a gravel track, it turns left again towards the recreational area of Partovia.
7. If the traveller chooses to follow the straight branch, the route reaches another intersection where it turns left through a dirt track towards O Covelo. Several gravel branches depart from this town; the ones on the left lead to the town of Grovas and to the Varón River while the ones on the right go to the church of Partovia, where again there are two possible routes: a trail on the right towards Refoxo and another on the left towards As Caldas.
8. There is also another option: going straight ahead from O Covelo and following a gravel track in the shade of oaks that leads to the recreational area of O Penedo, and continuing until reaching the nearby town of Mesego, through the paved road that crosses it, to see the church of Santa María.
9. In order to go back to the main route, the traveller must continue straight ahead and climb a gravel track that goes back to Grovas. Later on, the route reaches an intersection, where we must follow a gravel path with a wood railing towards the paved road leading again to the town of A Fraga.
10. From a Fraga, the route goes back along part of the initial path to join the track towards Fonteantiga.

**MIDE**

Harshness of natural environment	1	▲ Upward gradient	245 m
Guidance along the route	1	▼ Downward gradient	215 km
Route difficulty	2	≡ ROUTE LENGHT*	14,2 km
Amount of effort needed	3	🕒 TIME	2,3 h

◆ town    ● point of interest  
 \* Route lenght including all branches



SECTOR  
**NORTHWESTERN PENINSULAR**



**NATURE TRAIL  
THE ARRIEROS**

- Starting point
- End of trail
- Rest area
- Religious building